

MAKING THE SWITCH:

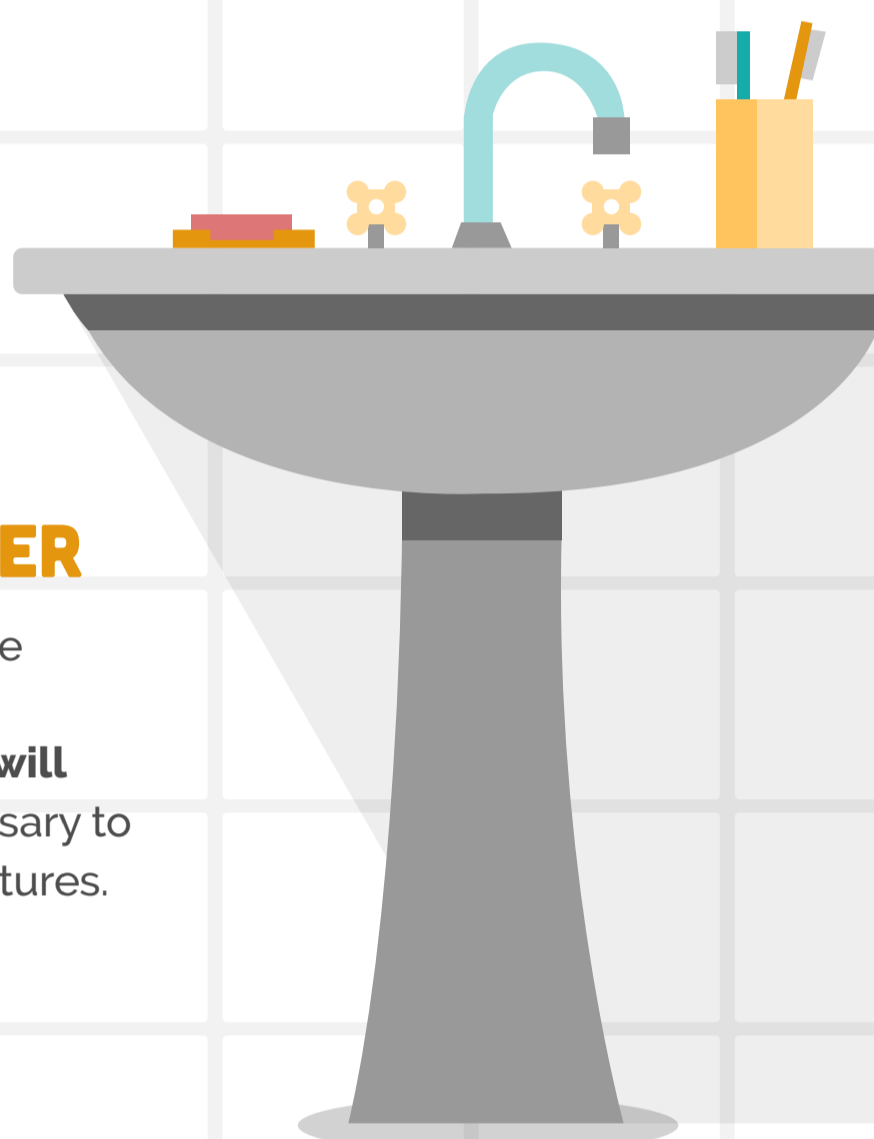
CONVERTING A CLOSET INTO A HALF BATH

Turning a closet into a half bathroom can bring a number of benefits, including added convenience and privacy for guests, increased home value and a much-needed new space for your family. Keep these things in mind when turning a closet into a convenient half bathroom:



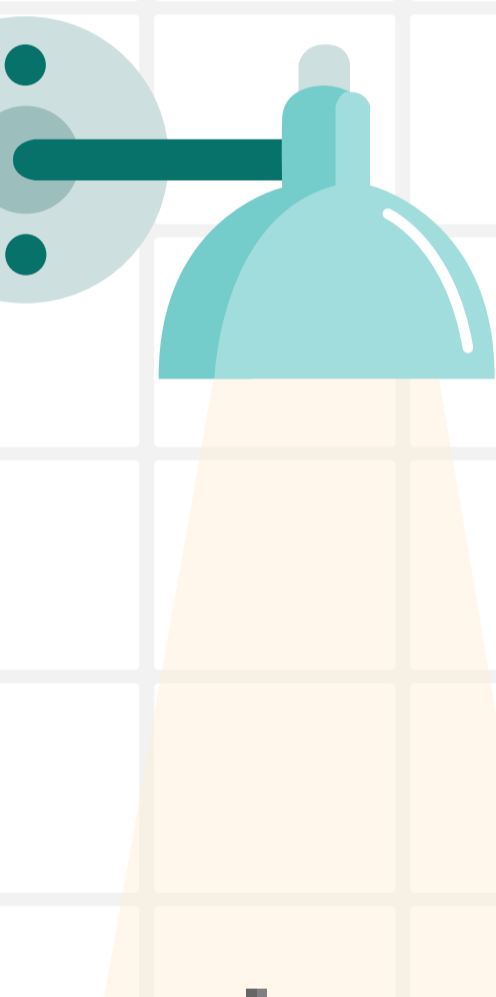
FIND THE RIGHT SPACE

The most basic half bathroom should include a sink, toilet and mirror – which means you should seek a space at least **6-8 feet in length and 3-4 feet in width**. It might also help if there's space to include storage for bathroom items like toilet paper, soap and cleaning materials.



SOMETHING IN THE WATER

A half bathroom will obviously need to be placed in a location near plumbing, so **installing it near an existing bathroom will help (and save money)**. It may be necessary to reinforce the floor to support the new fixtures.



THE RIGHT CONNECTIONS

Your new half bathroom will need **electricity and ventilation as part of current building codes**. The new connections will also need to be able to withstand moisture, since they will be in an area where water will be part of the primary use. Adding a bathroom typically requires permits and may increase your assessed taxes. However, it can also increase your home's value.

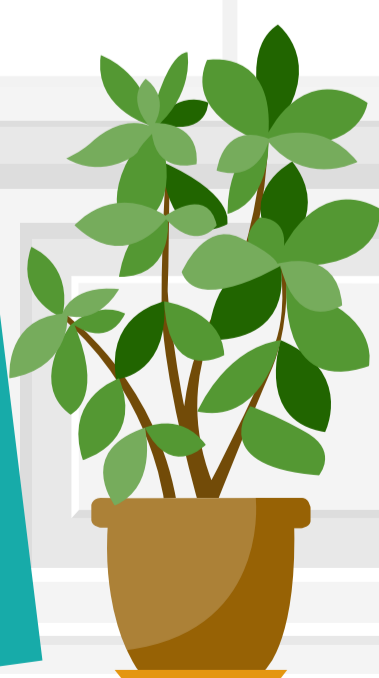
PEACE AND QUIET

Since your new half bathroom was formerly a closet, there probably wasn't a great need for soundproofing. But as a bathroom, you'll want to **wrap pipes and vents in soundproofing insulation**.



MAKING THE MOST OF IT

With a small space like a closet, **being creative can help maximize the area**. Special mirrors that fit in corners can provide a new option, as well as lighting that is flush against walls and ceilings.



DON'T SKIMP ON STYLE

Just because it's a half bathroom doesn't mean you have to make it half as nice. Since it might be primarily used by guests, make it extra special with **decorative molding, finishes and fixtures**.